

GLASS DOUBLE SALTS

EUROPEAN SALTS AND PEPPERS

DOUBLES

DOUBLES

AS SALT COLLECTORS, WE CALL THEM “DOUBLES” OR “DOUBLE SALTS,” BUT THEY REALLY ARE SALT AND PEPPERS. BOTH SALT AND PEPPER WERE SERVED OPEN STYLE, MAINLY IN EUROPEAN COUNTRIES. PART OF THE CONFUSION IN THINKING THEY WERE ONLY MEANT FOR SALT COULD COME FROM THE FACT THAT IN MANY EARLY FRENCH CATALOGS THEY WERE SHOWN ON THE SAME PAGES AS THE SINGLE SALT CELLARS UNDER THE CATEGORY HEADING OF “SALIERES.”



ARTICLES DIVERS DE TABLE

SALIÈRES



Modèles
déposés

TARIFICATION *page 136*



S.572



S.573



S.574



S.575



S.576



S.577



S.578



S.579



S.580



S.581



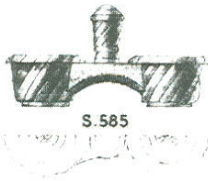
S.582



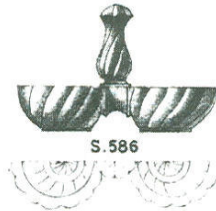
S.583



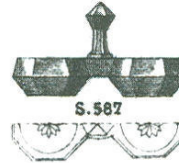
S.584



S.585



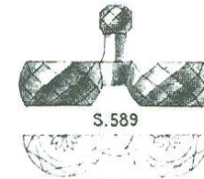
S.586



S.587



S.588



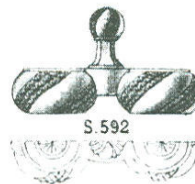
S.589



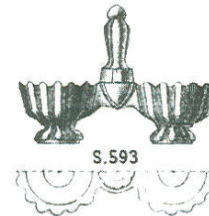
S.590



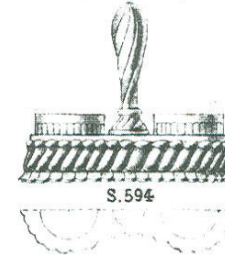
S.591



S.592



S.593



S.594



S.595



S.596



S.597

DOUBLES

AN 1890 RADEBERG, GERMANY CATALOG CALLS THEM
“DOPPELTE (DOUBLE) UND EINFACHE (SIMPLE)
SALZGEFASSE (SALT CELLAR).”

A 1903 FENNER CATALOG CALLS THEM “VERSCHIEDENE
SALZKANNEN – SALIERES DIVERSES.” (GERMAN AND
FRENCH FOR “VARIOUS SALTS.”)

BY 1936, A BROCKWITZ CATALOG LISTS SALTS IN FOUR
LANGUAGES – DOPPELTE SALZFASSER, SALIERES, SALT
CELLARS AND SALEROS – GERMAN, FRENCH, ENGLISH AND
SPANISH – ALL TRANSLATING TO SALT OR SALT CELLAR,
BUT STILL NO MENTION OF PEPPER.

Doppelte und einfache Salzgefäße. Senfgefäße. 36

Pressglas. — Moulure.

Tafel 109.

Verschiedene Salzkannen. — Salières diverses.

Tafel 50

Doppelte Salzfüßer

Salières — Salt-Cellars — Saleros

DOUBLES

SALT CELLARS, PARTICULARLY THE DOUBLES, ARE STILL USED IN SOME EUROPEAN RESTAURANTS TODAY. WITH THE RESURGENCE OF SEA SALTS AND LARGER CRYSTALS THAT ARE NOT MANAGEABLE IN SHAKERS, SINGLE OPEN SALT DISHES ARE MAKING A COMEBACK IN THE KITCHEN WITH THE COOKS AS WELL AS ON THE DINING TABLES. THIS APPLIES TO THE USA AS WELL. DOUBLES CAN NOW BE USED FOR TWO TYPES OF SEA SALTS – A TRUE DOUBLE SALT!

ANTIQUÉ GLASS DOUBLES INTRIGUE MANY OPEN SALT COLLECTORS. THEY ARE FOR THE MOST PART BUT A SMALL PORTION OF MOST COLLECTIONS, BUT COULD NUMBER IN THE THOUSANDS IF A COLLECTOR SHOULD DECIDE TO CONCENTRATE ON THEM.

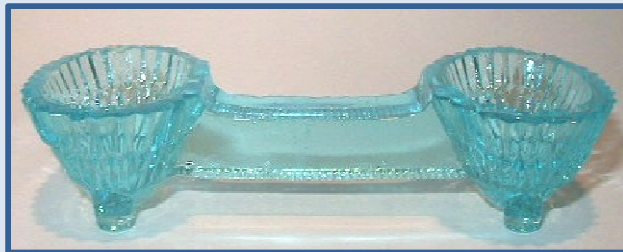
THEY
CAN BE
FAIRLY
PLAIN





OR THEY
CAN BE
QUITE
ORNATE

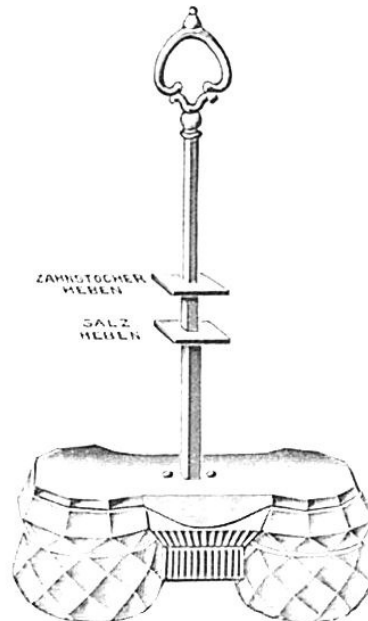
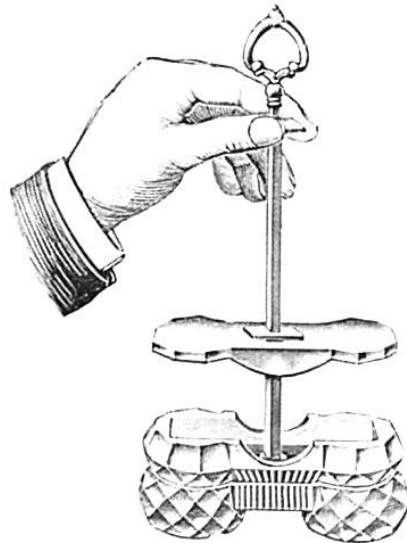
SOME “DOUBLE” AS TOOTHPICK HOLDERS OR KNIFE RESTS



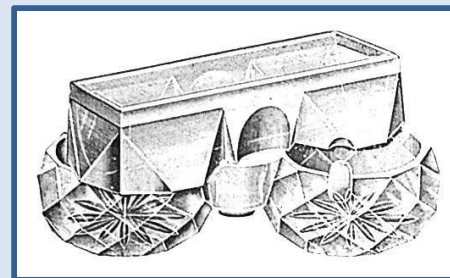
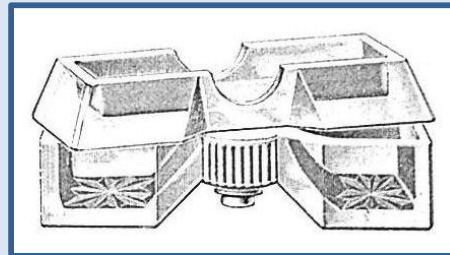
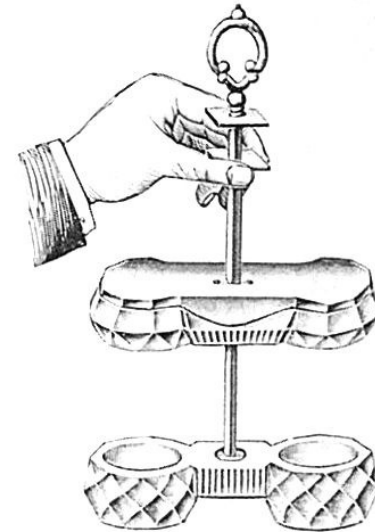
Der praktischeste hygienische
Salz-, Pfeffer- und Zahnstocher-Behälter.

(Österr. Patent Nr. 62.549, Ungar. Patent angemeldet.)

Letzte Neuheit!



Letzte Neuheit!



SOME A BIT MORE COMPLICATED



MOST ARE
CLEAR
GLASS





Inez Austin

SOME HAVE
GOLD OR
STAINING
ADDED





SOME HAVE
BEEN
PAINTED



THERE'S TRANSPARENT COLORS



VARIATIONS OF PINKS



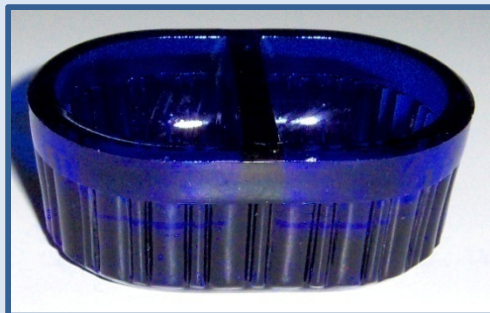


S
H
A
D
E
S

O
F

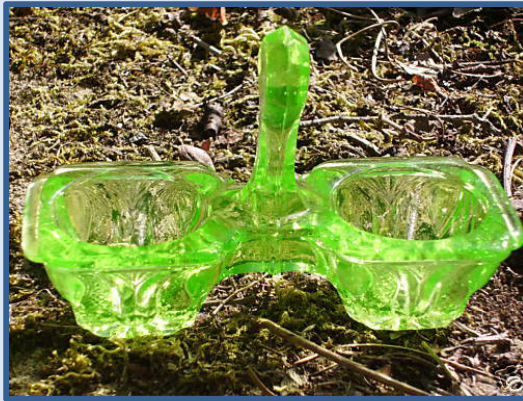
G
R
E
E
N





I
N
E
Z
A
U
S
T
I
N
O
F
F
B
E
R
G
E
L
E
C
T
I
O
N

VASELINE



AMBER





AND A FEW ODDITIES

THEN THERE ARE OPAQUE COLORS





MILK WHITE IS MOST COMMON

FOLLOWED BY MILK BLUE

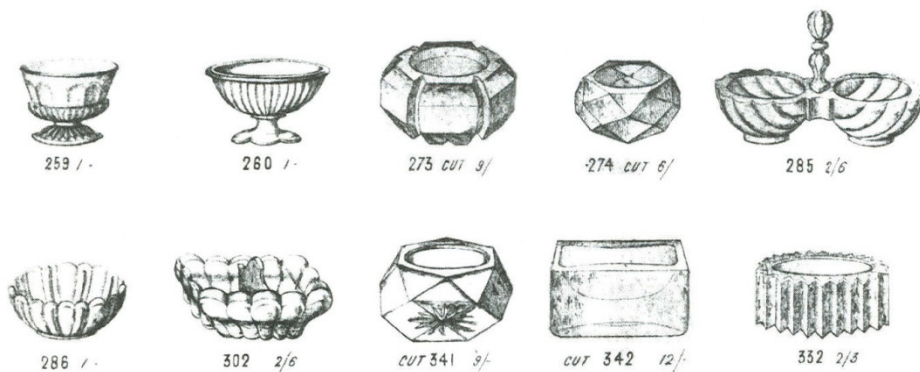


OLD CATALOG IMAGES ARE THE EASIEST WAY TO DETERMINE THE MAKER AND AGE OF YOUR DOUBLE SALTS. UNFORTUNATELY, US COMPANIES WERE NOT THE FIRST TO COPY AND IMITATE POPULAR DESIGNS AND GLASS PATTERNS. SO THERE ARE SOME “NOT QUITE IDENTICAL” EUROPEAN MADE DOUBLES. MANY TIMES THE DIFFERENCES ARE MINOR AND WILL ONLY BE SEEN IN A SIDE BY SIDE COMPARISON. CATALOG IMAGES ARE ONLY DRAWINGS. IN THE FOLLOWING CATALOG PAGES, YOU’LL NOTICE A TREND. ENGLAND HAD VERY FEW DOUBLE SALTS IN COMPARISON TO EUROPEAN COUNTRIES. FRANCE AND GERMANY SEEMED TO HAVE THE MOST, AND WERE MADE WELL INTO THE 1930s. THERE ARE NO LATER CATALOGS SO IT’S NOT KNOWN EXACTLY HOW LONG THESE WERE IN PRODUCTION. ALL THE FOLLOWING CATALOG IMAGES AND MANY, MANY MORE CAN BE FOUND ON THE WWW.OPENSALTS.US WEBSITE.

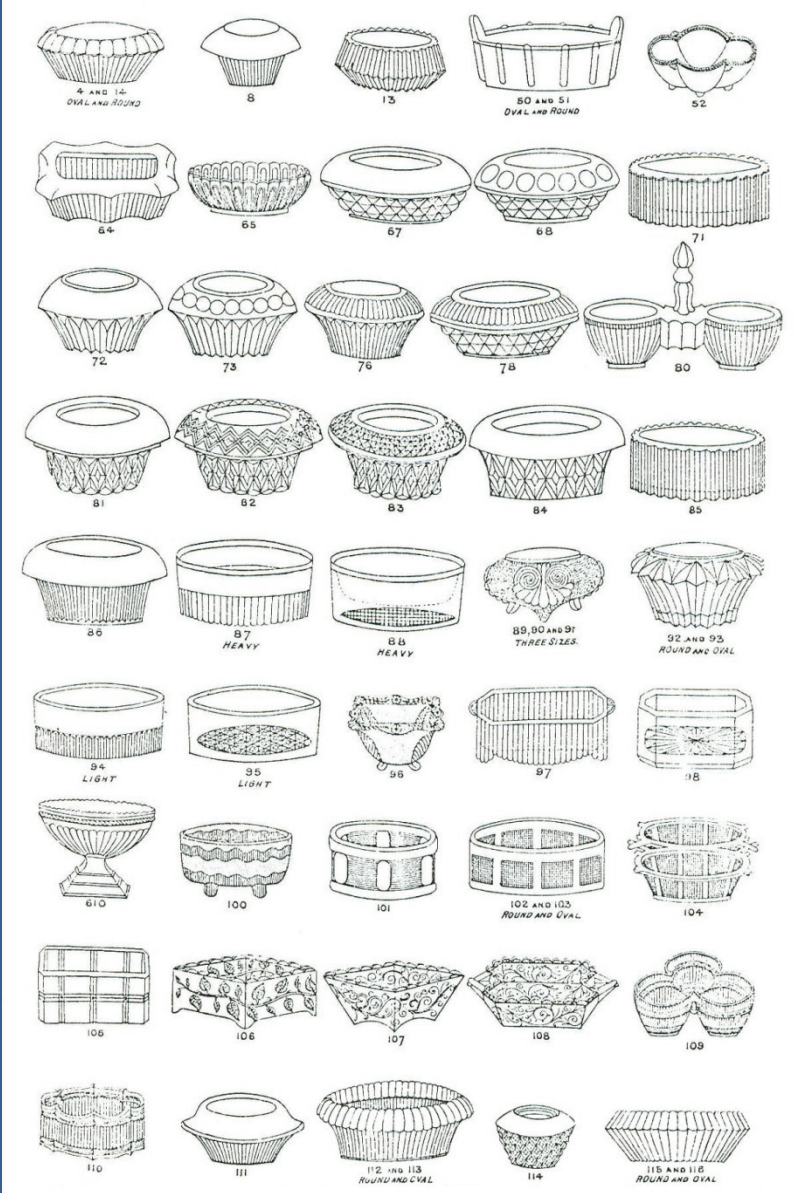
THE IMAGE BELOW IS FROM AN
 1870 EDWARD MOORE &
 COMPANY CATALOG IN SOUTH
 SHIELDS, ENGLAND. TO THE
 RIGHT IS A PAGE FROM AN
 1870 GEORGE DAVIDSON &
 COMPANY CATALOG LOCATED IN
 GATESHEAD-ON-TYNE, ENGLAND.

NOTICE THERE ARE ONLY TWO
 DOUBLES SHOWN AMIDST
 ALL THE INDIVIDUAL AND
 TABLE SIZE SALTS.

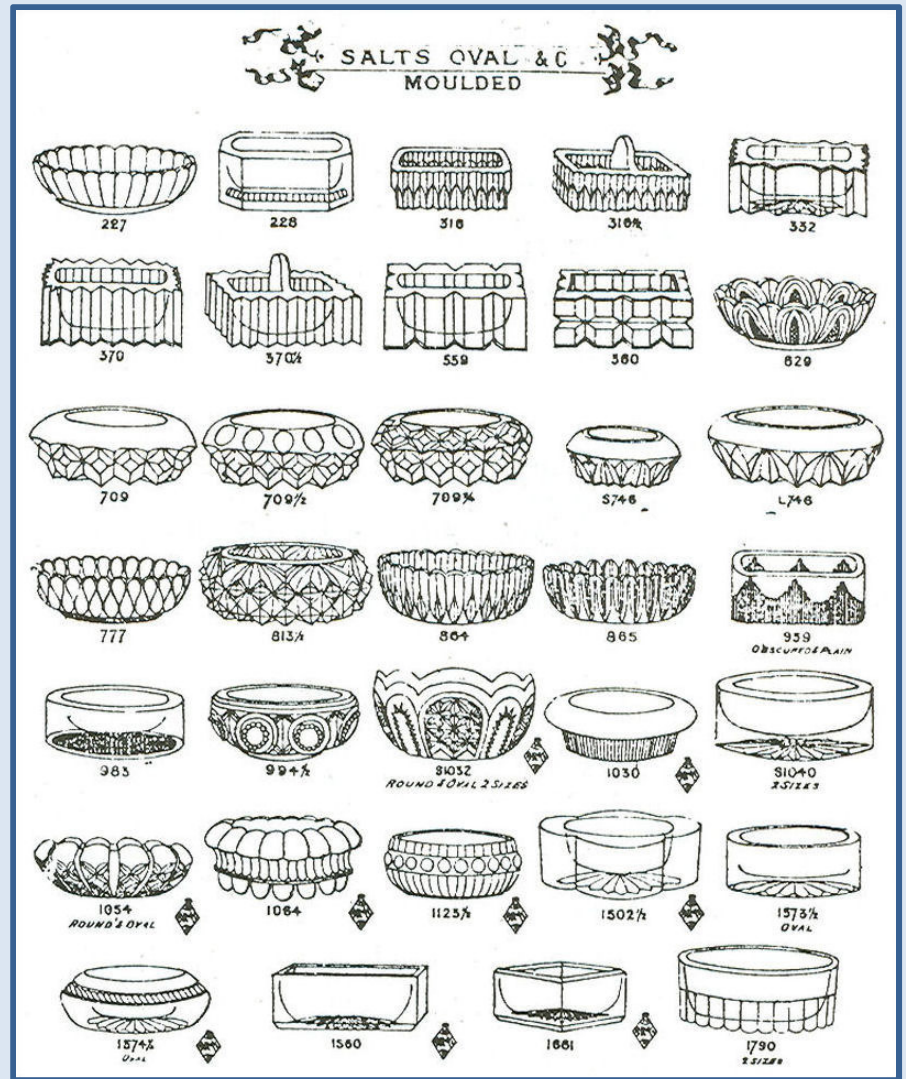
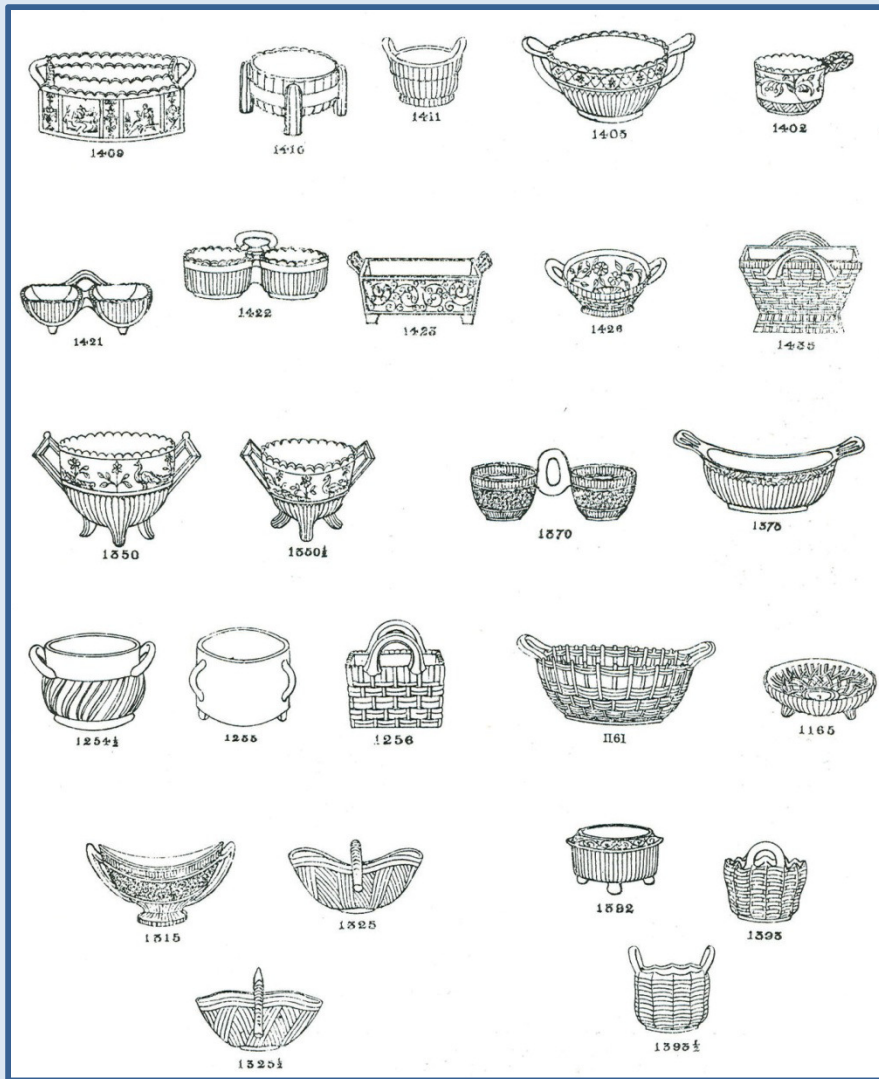
SALTS & SALVERS



SALTS



THESE ARE FROM SOWERBY CATALOGS, ALSO LOCATED IN GATESHEAD-ON-TYNE, ENGLAND. 1882 IS ON THE LEFT AND 1888 IS ON THE RIGHT. THERE ARE SEVERAL OTHER PAGES FROM THESE CATALOGS, BUT NONE THAT PICTURE ANY OTHER DOUBLES.



THIS IS A PAGE FROM A 1922 KARHULA-IITTALA
CATALOG FROM FINLAND.

SUOLAKKOJA, TUHKAKUPPEJA Y. M. — SALT KAR, ASKKOPPAR M. M.



4710 K



4711 K



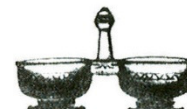
4712 K



4713 K



4714 K



4715 K



4716 K



4717 I



4718 I



4719 I



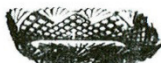
4720 I



4721 I



4800 I



4810 I



4820 I



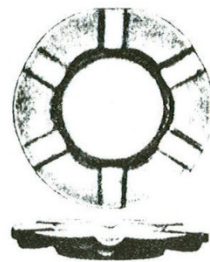
4830 K



4840 K



4841 K



4842 K



4843 I



4844 I

PLAAT XXXVI
 GEPERSTE ZOUTVAATJES. — SALIÈRES MOULÉES.
 MOULDED SALTS.



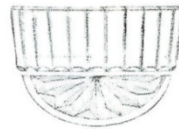
No. 641.



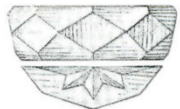
No. 642.



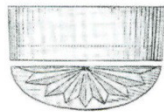
No. 686.



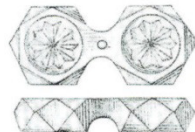
No. 1027.



No. 1028.



No. 1161.



No. 1173.



No. 1174.



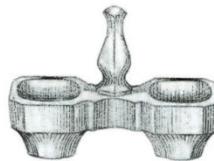
No. 1295.



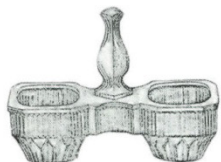
No. 1440.



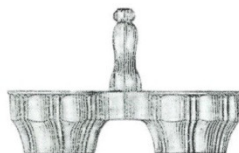
No. 1793.



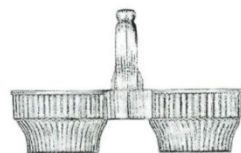
No. 1913.



No. 1914.



No. 1915.



No. 1916.



No. 2209.

LEERDAM, NETHERLANDS
 CATALOG PAGES.
 LEFT, A 1906 PAGE.
 BELOW, A 1910 PAGE.

N.V. GLASFABRIEK „LEERDAM”
 VOORHEEN JEEKEL, MIJNSSSEN & Co. — LEERDAM, HOLLAND.

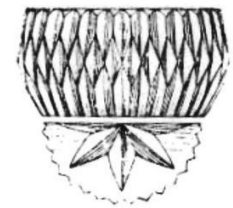
Moulded Salts.



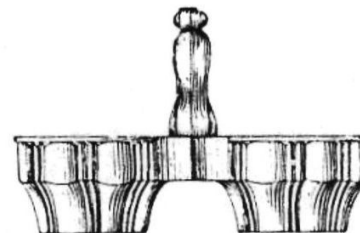
No. 686.



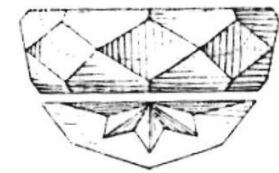
No 2209.



No. 1295.



No. 1915.



No. 1028.

Moulure
Suite du Service moulé côtes alternées dépolies

Vases Cornet
N° 4977 A



Hauteurs	Prix
275	6.50
310	4.50

Moutardier
sur plateau attaché
N° 4998 A



124 1.55

Moutardier à pied
N° 4999 A



122 1.90

Salière double à tige
N° 5012 A



Diamètres	Prix
128	1.05

Salières coupe à pied
N° 5015 A



72	2.40
72	2.25

Coupe à Miel
N° 5003 A



88 1.45

Coupe à Sucre
N° 5004 A



80 1.25

Porte-Couteaux
N° 5001 A



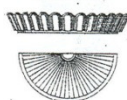
85	1.25
80	1.30

Porte-Bouteille
N° 5011 A



112 1.70

Porte-Carafe
N° 5010 A



124 1.85

Nota: Voir pages 301 et 302 pour les Observations générales.

Moulure
Service Moulé Renaissance dépoli

Coupes à pied bas
N° 202 B



Diamètres	Prix
250	3.75
225	2.60
200	2.00
180	1.70
160	1.40

Coupes à pied élevé
N° 203 B



270	5.75
225	3.85
200	3.00

Coupe à cornet
N° 204 B



Hauteurs	Diamètres	Prix
400	260	13.50

Sucriers ronds
N° 205 B



Sucrier	140	3.00	4.30
Plateau	175	1.30	
Sucrier	150	2.50	3.50
Plateau	180	1.00	

Salière double à tige
N° 206 B



Diamètres	Prix
137	1.10

Moutardier à pied
N° 207 B



125 1.25

Gobelet ordinaire
N° 208 B



118 1.90

Nota: Voir pages 301 et 302 pour les Observations générales.

Moulure
Salieres (Suite)

Salieres

N° 4361 A



N° 4362 A



N° 4361 A 29,50
N° 4362 A 28,50

N° 4363 A



N° 4363 A 26,50

N° 4327 A



30,50
33,00
20,40

N° 4359 A



30,00
24,50

Diapante homogène
Dépôt

N° 4814 A



a pied haut 25,40
a pied bas 07,20

N° 4331 A



N° 4334 A



30,00
20,40
06,25

Salieres

Céto allégresse
Dépôt

N° 5015 A



a pied haut 22,40
a pied bas 22,35

N° 5075 A



a pied haut 22,30
a pied bas 08,20

Céto allégresse
Dépôt

N° 5085 A



a pied haut 22,30
a pied bas 22,25

N° 4357 A



N° 4358 A



N° 4357 A 24,25
N° 4358 A 06,20

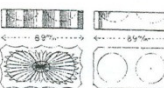
BACCARAT CO.
1893 FRANCE

NOTICE THE INSERTS
FOR SILVER PEDESTAL
BASES AND DOUBLES
DIRECTLY ABOVE

Nota: Voir pages 301 et 302 pour les Observations générales.

Moulure
Salieres (Suite)

N° 4367 A



N° 4365 A



80,60
70,50

N° 4372 A



120,05

Céto allégresse
Dépôt

N° 5012 A



128,05

Diapante homogène
Dépôt

N° 4813 A



122,05

Moulure Penitence
Dépôt

N° 206 B



127,20

N° 4371 A



142,90

N° 4369 A



122,90

Céto allégresse
Dépôt

N° 3074 A



125,75

N° 5082 A



128,75

N° 5344 A



128,60

N° 4370 A



120,60

N° 5428 A



127,60

Nota: Voir pages 301 et 302 pour les Observations générales.

Moulure
Salieres moulées, montées tige bronze argenté

N°	Dimensions	Grandeurs	Prix	N°	Dimensions	Grandeurs	Prix
N° 779 B	128 7/8		1.55	N° 784 B	123 7/8		1.70
N° 780 B	144	Grande 1.70 Moyenne 1.55 Petite 1.40		N° 785 B	146 7/8	Grande 1.70 Moyenne 1.55 Petite 1.40	
N° 781 B	135 7/8		1.40	N° 786 B	138 7/8		1.35
N° 782 B	135 7/8		1.45	N° 787 B	137 7/8		1.75
N° 783 B	98 7/8	Grande 1.70 Moyenne 1.55 Petite 1.40		N° 788 B	128 7/8	Grande 1.75 Moyenne 1.60 Petite 1.35	

Nota: Voir pages 301 et 302 pour les Observations générales.

Moulure
Articles moulure Russe (Suite)

Description	N°	Dimensions	Prix	Description	N°	Dimensions	Prix
Salière double à tige cristal.	N° 937 B	135 7/8	1.45	Flambeaux	N° 942 B	225 7/8	2.00
Salière double, tige bronze argenté	N° 938 B	135 7/8	1.05	Bougeoir sans bobèche	N° 943 B	200	1.50
Moutardier à pied	N° 939 B	125 7/8	0.65	Bougeoir avec bobèche	N° 944 B	180	1.00
Porte-couteaux	N° 940 B	85 7/8	0.25	Bobèche renversée	N° 945 B	80 7/8	0.20
Porte-craie	N° 941 B	140 7/8	0.50	Bobèche ordinaire	N° 946 B	80 7/8	0.20

Nota: Voir pages 301 et 302 pour les Observations générales.

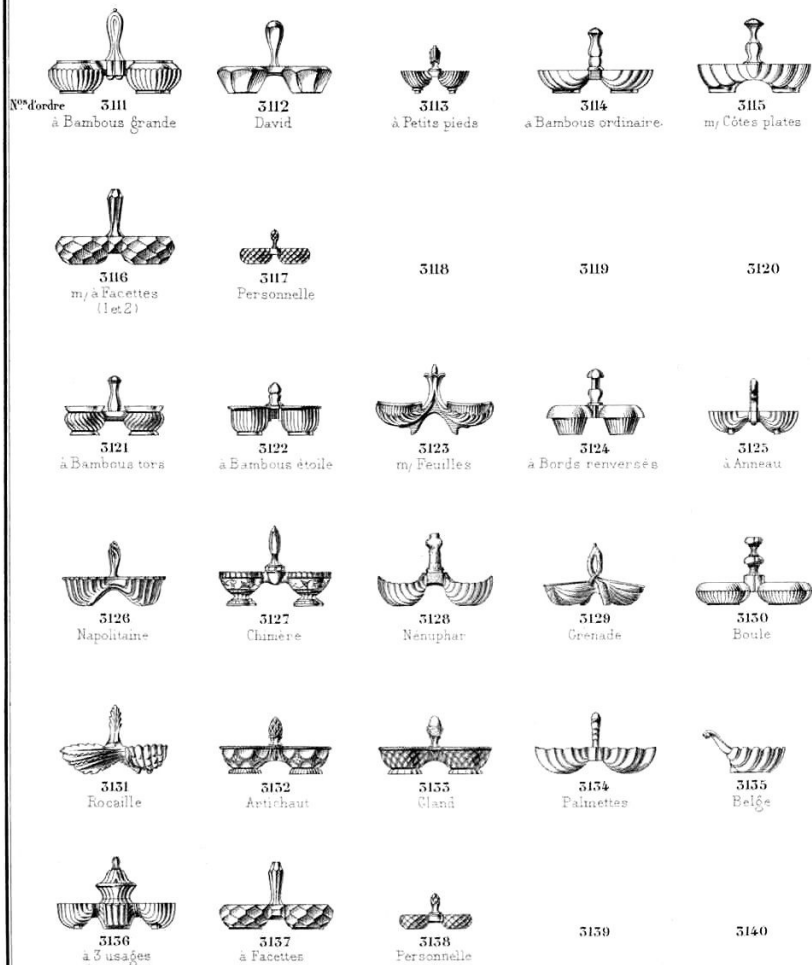
2^{ème} Partie



Planche 170

SALIÈRES DIVERSES

Folio 170

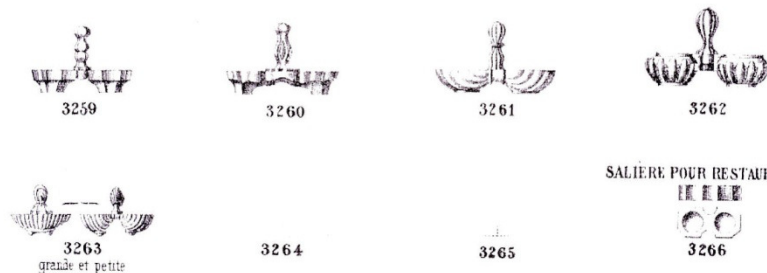


2^{ème} Partie.

Planche 212.

SALIÈRES DOUBLES A TIGE DE VERRE REBRULÉES

Folio 216



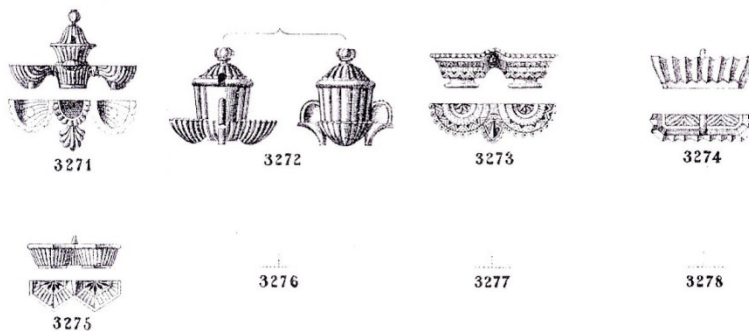
SALIÈRES DOUBLES À TIGE DE BOIS REBRULÉES

Folio 216



SALIÈRES DOUBLES À PATTES NON REBRULÉES

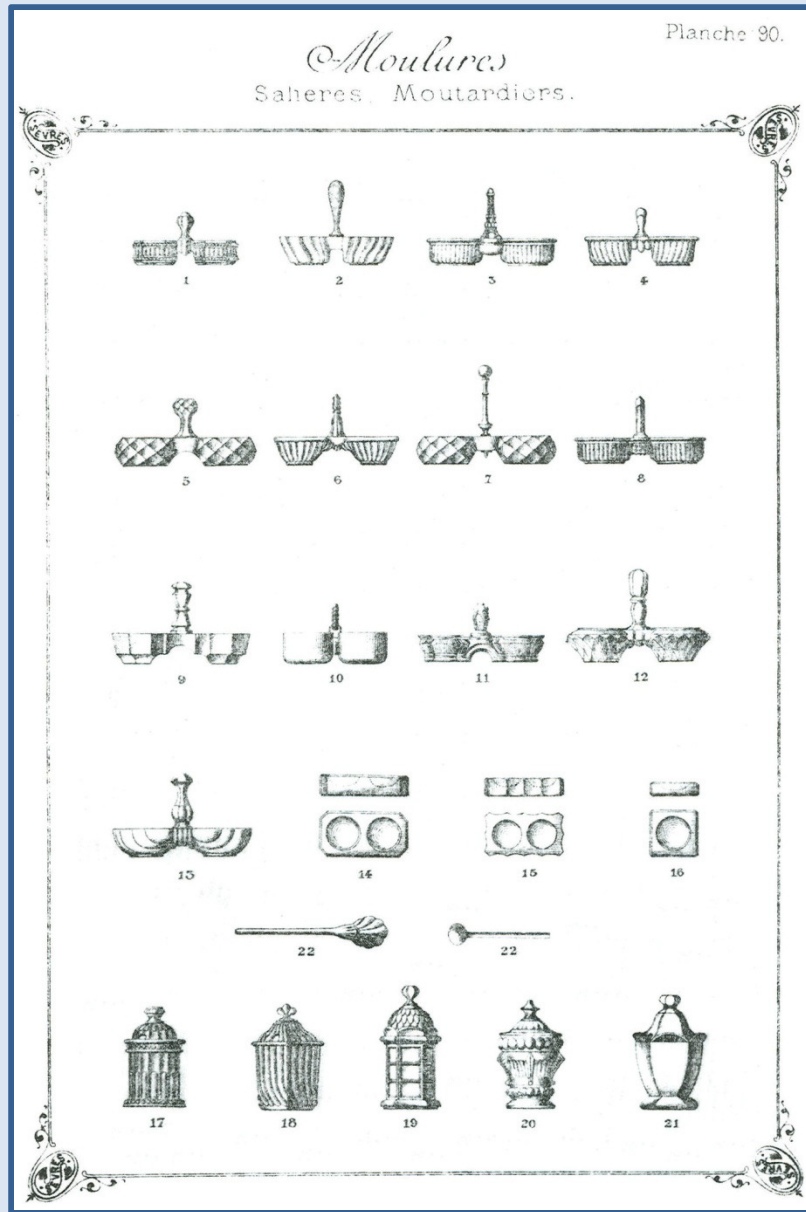
Folio 216



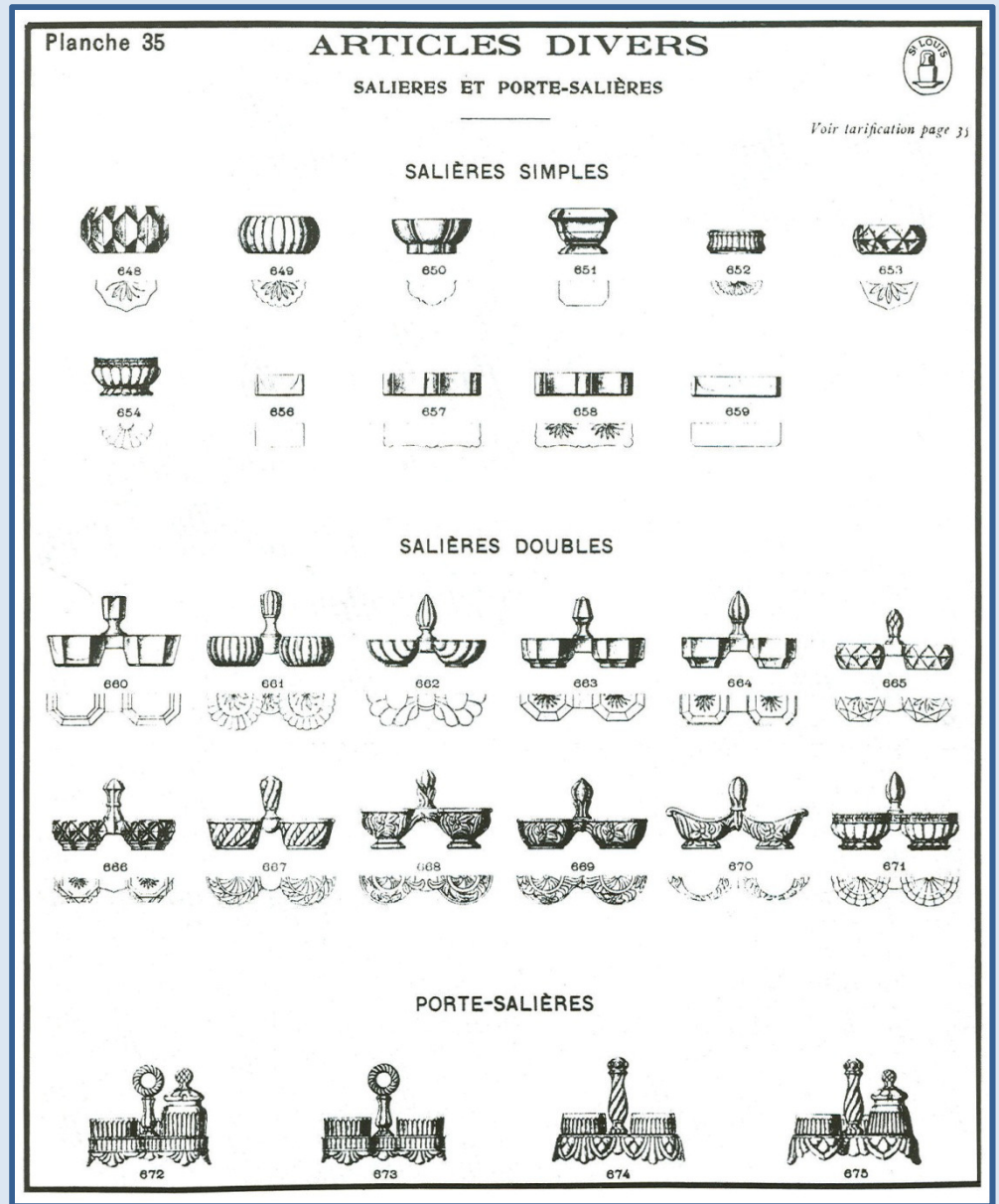
VERRERIES DE PORTIEUX.

VERRERIES DE VALLÉRYSTHAL

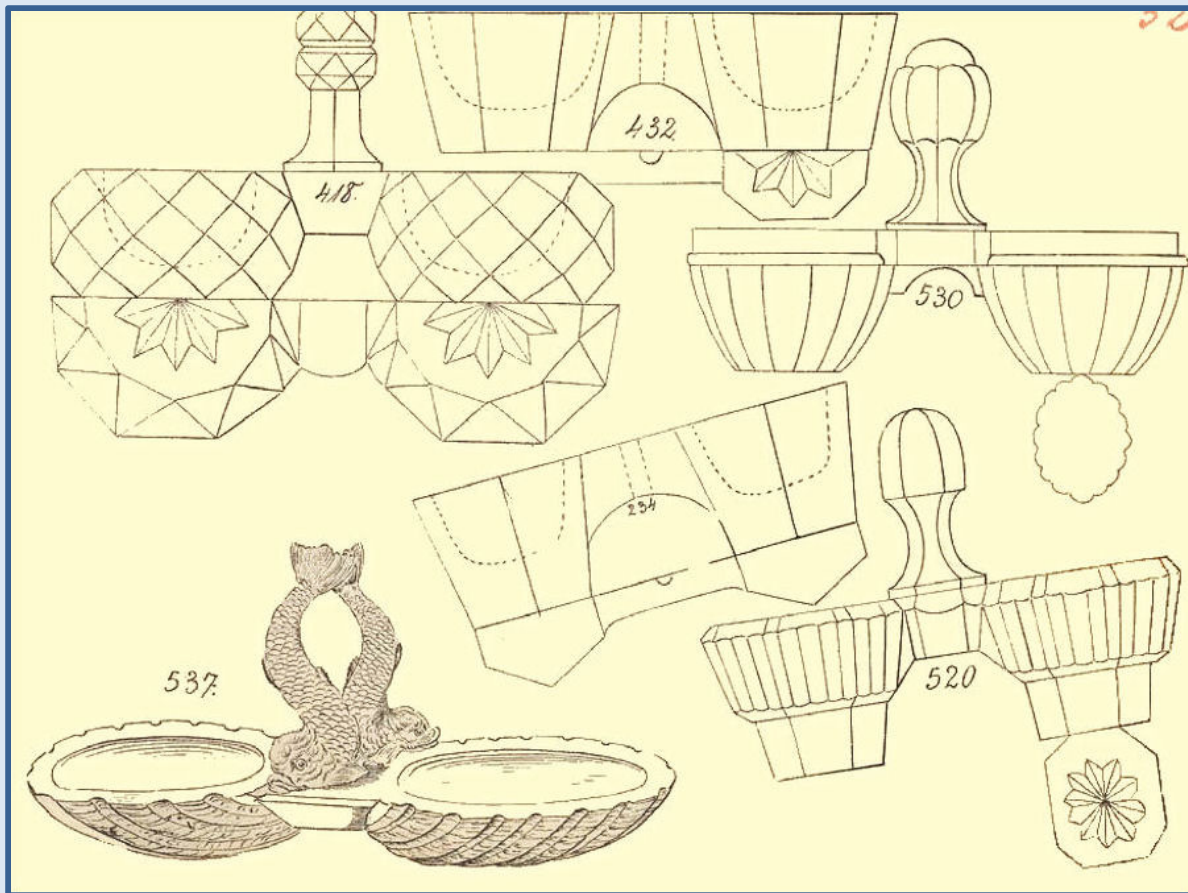
FRANCE - SEVRES 1888



FRANCE - ST. LOUIS 1903



GERMANY - RIEDEL 1885



NOT AN EXACT
MATCH —
BUT VERY
BEAUTIFUL
NONETHELESS

GERMANY - ADLERHUETTEN 1928

MOST CATALOGS SHOW INDIVIDUALS, GLASS HANDLED ONE PIECE DOUBLES
AND ALSO GLASS WHERE METAL OR WOOD HANDLES CAN BE ATTACHED.

Salzfässer



No. 7052
RM. 5.50



No. 7780
RM. 5.50



No. 9380
RM. 6.75



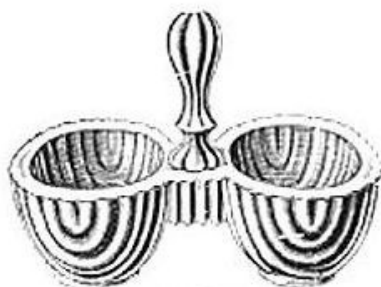
No. 9381
RM. 6.75



No. 9499
mit glattem Boden
RM. 7.—
mit überschlifffnem Boden
RM. 11.—



No. 9877
RM. 8.—



No. 7009
RM. 10.—



No. 9510
RM. 10.—



No. 9686
RM. 10.—



No. 7506
mit Loch
RM. 12.—



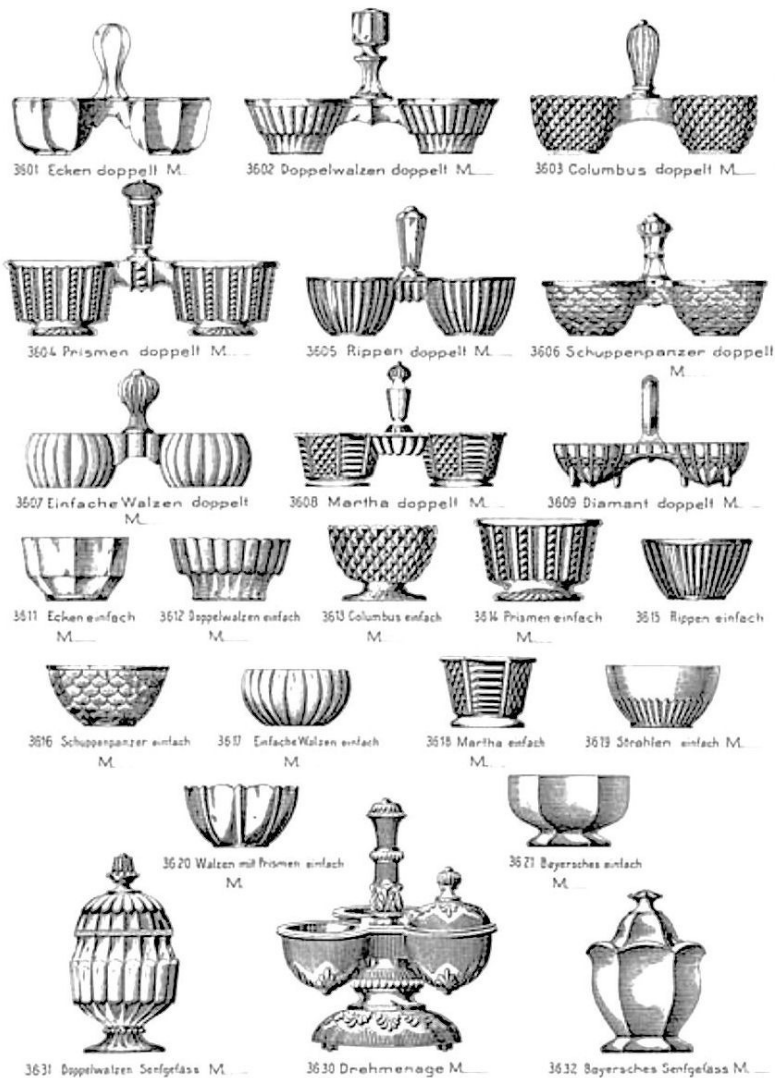
No. 7008
mit Loch, Boden überschlifffnen
RM. 27.50



Salzfaß
RM. 20.—

GERMANY - RADEBERG | 1890

Doppelte und einfache Salzgefäße. Senfgefäße. 36

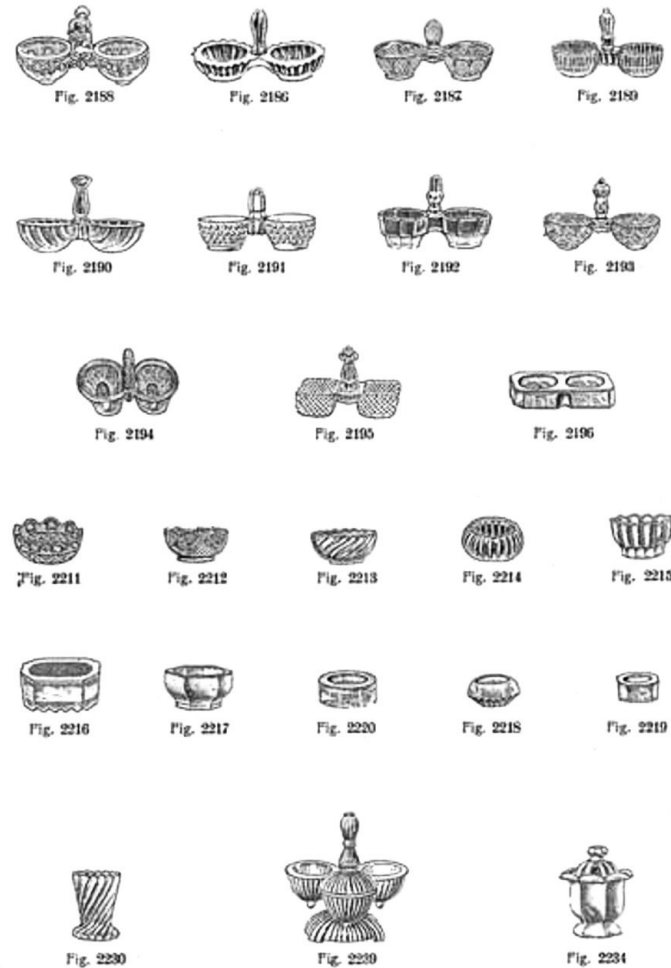


1/2 der nat. Grösse

GERMANY - MEISENTHAL | 1907

- 117 -

Diverse Artikel.



GERMANY – WALTHER 1930

60



Keildecken, rund



Keildecken, oval



Bambus



Eisglas



Kugel und Stern



Flächen



Schuppen



Muschel



Prismen



Bambus



Berlin



Potsdam



Streifen



Ecken mit Loch



Walzen mit Steg



Keildecken



Walzen



Fritz



Romeo



Columbus

VILLEROY & BOCH 1908

VILLEROY & BOCH IN WADGASSEN-SAAR.

Verschiedenes.



Fig. 1



Fig. 2



Fig. 3



Fig. 4



Fig. 5



Fig. 6



Fig. 7



Fig. 8



Fig. 9



Fig. 10



Fig. 11



Fig. 12



Fig. 13



Fig. 14



Fig. 15



Fig. 16



Fig. 17



Fig. 18

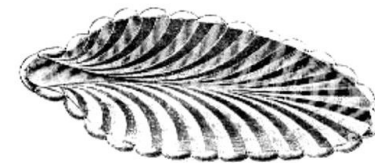


Fig. 19

Tafel 119.
Dresden, 1908.

GERMANY – BROCKWITZ 1928 AND 1936 CATALOG PAGES.
 NOT MANY CHANGES EXCEPT THE FANCIEST ONES ARE GONE AND THERE ARE
 NOW MORE SINGLES. THE COVERED HEN IS AVAILABLE AS A SINGLE OR DOUBLE.

Tafel 94

Doppelte Salzfässer



Nr. 8303
M 9.—



Nr. 8306
M 8.—



Nr. 8311
M 12.—



Nr. 8312
verwärmt M 18.—
unverwärmt „ 15.—



Nr. 8380 oval
M 16.—



Nr. 8382
M 10.50



Nr. 8383
M 17.50



Nr. 8385 mit Zahnstocherhalter
M 16.50



Nr. 8387
M 12.—



Nr. 8390
M 14.—



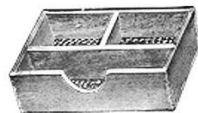
Nr. 8394
M 8.50



Nr. 8397
M 10.—



Nr. 12750
M 13.—



Nr. 12751
M 24.—



Nr. 15750
M 16.—

Tafel 50

Doppelte Salzfässer

Salières — Salt-Cellars — Saleros



No. 8303



No. 8306



No. 8380



No. 8382



No. 8383



No. 8390



No. 8397



No. 8437



No. 8439 10½ × 6½ cm

Einfache Salzfässer

Salières — Salt-Cellars — Saleros



No. 8243 8½ × 6½ cm
deutsch engl. russk.

No. 8244 8½ × 6½ cm
deutsch russk. engl. russk.



No. 8400 7 cm



No. 8401 8 cm



No. 8402 8 cm



No. 8405 7 cm



No. 8409 6½ cm



No. 8413/1 8413/2
cm 6 4



No. 8417 5 cm

AND NOW. . .

ALL THE USA CATALOGS

SHOWING

GLASS DOUBLES. . .

THERE ARE PROBABLY NEARLY AS MANY DIFFERENT METAL AND WOOD
HANDLED DOUBLES AS THERE ARE ALL GLASS ONES.
HERE'S JUST A FEW SIMPLE EXAMPLES. . .





AND A FEW MORE ELABORATE ONES...



NOTE THAT ON SOME DOUBLES, THE TWO SALTS ARE ONE PIECE (BOTTOM ROW) WHILE ON OTHERS, THE SALTS MAY HAVE A KNOB THAT FITS INTO A HOLE (TOP CENTER).

STILL OTHERS COULD BE SINGLE SALTS WHEN REMOVED FROM THEIR HOLDERS.



NOW LET'S HAVE A LOOK
AT MORE COLORFUL
AND FUN DOUBLES

CHILD SIZE TOYS OR MINIS



A MYRIAD OF FIGURALS



DOGS AND PEOPLE



CHICKENS AND ROOSTERS



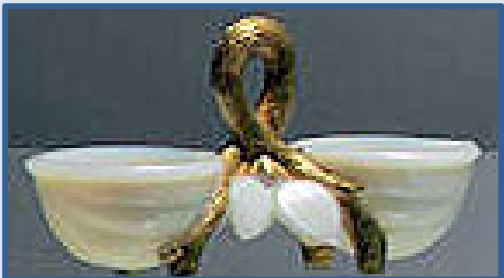
CARS AND SWANS



BIRDS AND ANIMALS



SQUIRRELS AND NUTS



NEW DOUBLES



THESE WERE ON EBAY IN 2009. SINCE THEY ARE THE SAME MOLD IN DIFFERENT COLORS, AND COLORS A BIT DIFFERENT IN A FEW CASES THAN EVER SEEN BEFORE, ONE CAN ASSUME THEY ARE OF MORE RECENT PRODUCTION. STILL VERY PRETTY AND PERFECT IN ANY DOUBLES COLLECTION, BUT AS IN SO MANY OTHER FACETS OF ANTIQUE COLLECTING, BEWARE OF PAYING ANTIQUE PRICES FOR NEWER ITEMS.

GLASS DOUBLE SALTS

THE END